

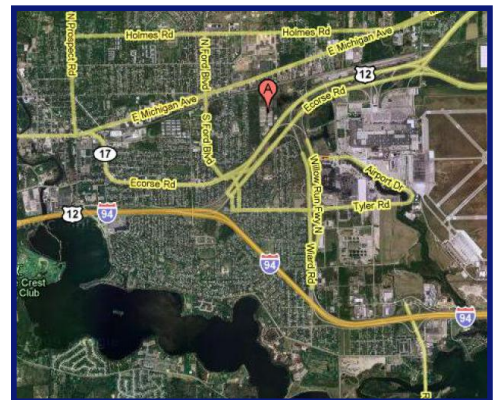
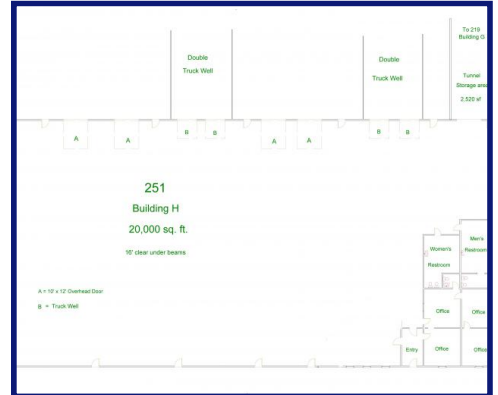


Swisher
COMMERCIAL

For Lease

251 Airport Industrial

Ypsilanti, Michigan



Building relationships.

LOCATION:

- Airport Industrial Center, multi-tenant Industrial Park
- Located off the M-17/US-12 bypass
- Northwest of Willow Run Airport

BUILDING:

- 20,000 sf warehouse or manufacturing building
- 900 sf office
- 4 loading docks
- 4 grade level overhead doors
- 16' ceiling
- 480 volt, 1200 amp, 3-phase electric service with buss duct

ZONING:

- I-2 General Industrial
- Ypsilanti Township, 734-483-3943

UTILITIES:

- Gas and electric from DTE (800-477-4747)
- Water and sewer from YCUA (734-484-4600)

WEBSITE: www.airportindustrialcenter.com

LEASE RATE:

- \$6.90 per sf
- \$11,500 per month plus utilities

For more information, call:

David Hamilton, CCIM
daveh@swishercommercial.com
734-662-3745

208 E. Washington Ann Arbor, MI 48104

www.swishercommercial.com

Swisher
COMMERCIAL